



Building lifestyles since 1967

**Lucknow City Office :-**

1st Floor, YMCA Campus, 13 Rana Pratap Marg,  
Lucknow- 226001., Ph: 0522 - 4096200

**Site Marketing Office :-**

Sushant Golf City, Lucknow-Sultanpur road  
Next to Amar Shaheed Path  
Ph: 0522-6456150

**Delhi Corporate Office:-**

115, Ansal Bhawan, 16 Kasturba Gandhi Marg, New Delhi 110001,  
Tel: 011-23353550, 66302268/69/70, Fax:66302261,  
E-mail: info@ansalapi.com

**Regional Office :-**

Delhi & NCR: Faridabad, Gurgaon, Delhi, Greater Noida, Ghaziabad  
Haryana: Kamal, Kurukshetra, Panipat, Sonapat, Yamunanagar  
Punjab: Amritsar, Bhatinda, Jalandhar, Ludhiana, Mohali, Chandigarh  
Rajasthan: Ajmer, Bhiwara, Jaipur, Jodhpur, Bikaner  
Uttar Pradesh: Agra, Lucknow, Meerut

Toll Free No. :- 1800 266 5565  
www.ansalapi.com, www.sushantgolfcity.in

Or  
SMS 'API' to  
**57575**



Building lifestyles since 1967



Established in 1967 as a family business, Ansal API today is among the leading Realty and Infrastructure companies of India. A widely reputed and professionally managed organization, Ansal API currently operates in a large range of business verticals such as Integrated Townships, Condominiums, Group Housing, Malls, Shopping Complex, Hotels, SEZs and IT parks and Infrastructure and Utility Services.

Today Ansal API is one of the most respected and trusted names in the entire Realty-Infrastructure sector. In keeping with the Government's new Housing Policy, the Company also endeavors to provide better dwelling units for the urban poor with special emphasis on improvement in environment and social forestry. With its deep-rooted foundation of ethics and values, Ansal API continues to conquer new horizons, thus pioneering and identifying new vistas of growth for the realty and infrastructure sectors.

Ansal API is focusing on ushering in new reality and other infrastructure ventures in cities like Chandigarh, Bhatinda, Mohali, Amritsar, Ludhiana, Jalandhar, Jaipur, Jodhpur, Ajmer, Bhilwara, Sonapat, Panipat, Yamuna Nagar, Karnal, Kurukshetra, Faridabad, Gurgaon, Greater Noida, Noida, Ghaziabad, Meerut, Agra and Lucknow to name a few....



Grand entrance of Sushant Golf City



Welcome to Sushant Golf City, Lucknow, a Hi-tech Township sprawling across 3530\* acres. Located on Amar Shaheed Path & Lucknow-Sultanpur Highway. This ultra modern township has a world class – 18 hole international standard championship Golf Course surrounded by Residential and Commercial Developments. Making life on the greens a reality, Luxury Villas, Designer Landscaping, Entertainment Zones, State-of-the art Infrastructure, Health Care Facilities, Ansal ISKCON Spiritual Centre, Bharti-Walmart, Golf Academy, Ansal API Auto Park- Northern India's First Auto Mall & much more have been specially designed to exceed your expectations.

After successfully completing 11 years in Gurgaon, Ansal Institute of Technology & Management (A.I.T.M) is operational in Sushant Golf City, Lucknow.

## Exclusive Amenities Of The Township



Ansal Institute of Technology &amp; Management



Golf Academy



Developed Roads



Ansal API ISKCON Spiritual Center



BEST PRICE



G. D. Goenka Public School



SJ International School



The Palms Golf Club &amp; Resort



Sub Post Office



Allahabad Bank



Substation



Police Chowki



Milk 'N' More



An artistic impression of Celebrity Meadows

## Celebrity Meadows: Unmatched Style & Elegance

Strategically located in Sushant Golf City, Celebrity Meadows is a modern group housing with expansive natural vegetation and landscaped greens. Celebrity Meadows offers panoramic view of well-manicured greenery & golf course.

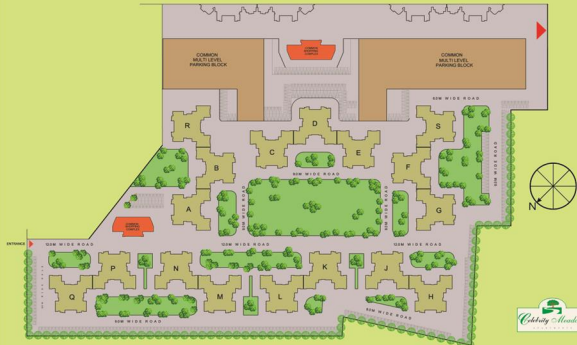
These apartments are the latest offerings of Sushant Golf City which are tastefully designed for luxury with style & elegance. Residents of Celebrity Meadows will have abundance of fresh air and sunshine.

These apartments provide you a choice to select your dream home according to your lifestyle. Specifically designed these 2 & 3 BHK (+ Study) apartments have been conceived to fulfill the standards of sophistication and style for the connoisseurs.





## SITE PLAN, CELEBRITY MEADOWS



TYPE-3  
AREA-1336 Sqft.

TYPE-4  
AREA-1360 Sqft.

TYPE-2  
AREA-2086 Sqft.

GROUND FLOOR PLAN  
BLOCK - A, B, C, E, M, N and R



TYPE-3  
AREA-1336 Sqft.

TYPE-4  
AREA-1360 Sqft.

GROUND FLOOR PLAN  
BLOCK - D



TYPE-3  
AREA-1336 Sqft.

TYPE-4  
AREA-1360 Sqft.

TYPE-2  
AREA-2086 Sqft.

GROUND FLOOR PLAN  
BLOCKS - P, K, J and F



TYPE-3  
AREA-1336 Sqft.

TYPE-4  
AREA-1360 Sqft.

TYPE-1  
AREA-2086 Sqft.

TYPE-4  
AREA-1808 Sqft.

GROUND FLOOR PLAN  
BLOCK - G, H, L, Q



TYPE-3  
AREA-1336 Sqft.

 TYPE-4  
AREA-1360 Sqft.

 TYPE-2  
AREA-2086 Sqft.

 TYPICAL FLOOR PLAN  
BLOCK - A, B, C, D, E, M, N and R

 TYPE-1  
AREA-2086 Sqft.

 TYPE-3  
AREA-1336 Sqft.

 TYPE-4  
AREA-1360 Sqft.

 TYPE-2  
AREA-2086 Sqft.

 TYPICAL FLOOR PLAN  
BLOCK - F, G, H, J, K, L, P, Q

 TYPE-1  
AREA-2086 Sqft.

## SPECIFICATIONS

<b>STRUCTURE</b>	Framed Structure conforming to BIS seismic codes with block masonry filler walls
<b>FLOOR FINISHES</b>	
Living/ Dining	Vitrified tiles / Marble floor
Bedrooms	Laminated wooden flooring / Ceramic tiles
Stairs	Stone flooring on treads
Balconies	Non - skid ceramic tiles
<b>TOILETS</b>	
Flooring	Non - skid ceramic tiles/ Porcelain tiles
Walls	Tiles as per architectural design
Chinaware	European type WC, wash hand basin
	Single lever CP fittings
Counter	Marble / Granite counter
Water Supply	Provision for hot and cold water supply
Other Fixtures	Looking mirror, Towel ring/rod, Paper holder, Soap dish and Health faucet
	Glass partition in bathing area of master bedroom toilet
<b>KITCHEN</b>	
Flooring	Non - skid ceramic tiles or equivalent
Dado	Ceramic Tiles cladding on walls as per architectural design
Counter	Granite
Cabinets	Modular kitchen cabinets with chimney and hob
Water Supply	Provision for hot and cold water supply
Fittings	Single lever CP fittings with mixers
Sink	Stainless sink with drain board
<b>JOINERY</b>	
Windows	UPVC / Anodised aluminium with float glass
Doors	Machine made moulded door shutter with S.S. fittings
	Main entrance door shall be a security door
Internal	Drawing and dining rooms/ bedrooms walls shall be finished with plastic emulsion paint as per design
External	Pleasing elevation with semi - permanent finish / All weather exterior paints
<b>OTHER FEATURES</b>	
Electrical	Copper wiring in conduits with modular switches
Telecommunication	Provision of telephone points in drawing room, dining room and all bedrooms
	Provision of TV aerial points in drawing room/ lobby and all bedrooms
<b>OTHERS</b>	
	Videophone at main entrance door • 25 ltr. capacity geysers in all bathrooms • 15 ltr. capacity geyser in kitchen
	• Exhaust fans in all bathrooms shall be provided • Water purifier with 10 ltr/hr. capacity in kitchen

Disclaimer: All Details, Floor Plans, Perspectives, Specifications are indicative and are subject to change as decided by the company or by the competent authority in the best interest of the development.

## Other products in focus at Sushant Golf City

### Apartments



Harmony Enclave  
2 & 3 BHK Apartments



Orchard Greens  
Premium 2 & 3 BHK apartments and penthouses



Celebrity Meadows  
2 & 3 BHK exclusive affordable apartments

### Villas



Palm Villa  
Luxury homes for the privileged few



Palm Spring Villa  
Premium luxury homes



Golf Villa  
The royals never had it so good

### Commercials



Galaxy Mall  
A new orbit for shopping



Felix Square  
Perfect destination for retail & corporate



Millennium Square  
Shopping is a natural experience now