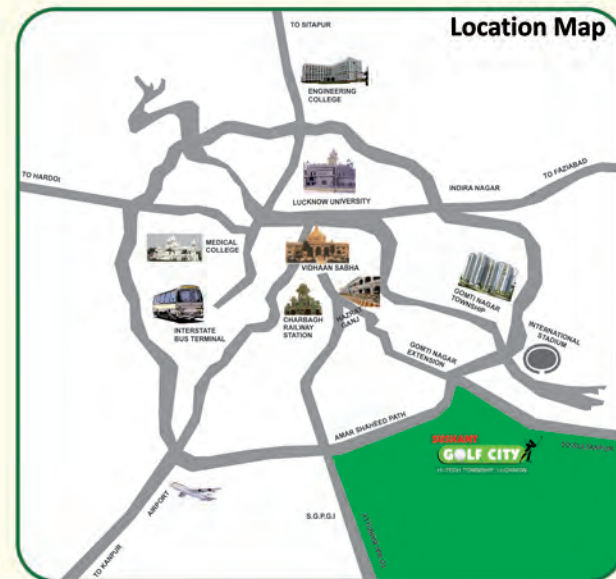




ACTUAL PICTURE OF PARADISE CRYSTAL



Delhi Corporate Office:-
115, Ansal Bhawan, 16 Kasturba Gandhi Marg, New Delhi 110001,
Tel: 011-23353550, 23717854, 07530813009
Website: www.ansalapi.com, www.sushantgolfcity.in

Lucknow City Office :-
1st Floor, YMCA Campus, 13 Rana Pratap Marg, Lucknow- 226001.,
Ph: 08081777906, 0522 - 4096200

Toll Free No.:- 1800 266 5565

SMS 'API' to 57575




**PARADISE
CRYSTAL**
EXCLUSIVE AFFORDABLE APARTMENTS

Township Layout



Paradise Crystal - Highlights



- ❖ Convenient & comfortable 2 BHK apartments ❖ Close to green landscaped rotary
- Private balconies in each apartment ❖ 24X7 securitised complex
- ❖ Convenient shopping/Commercial area in close vicinity
- ❖ Apartment with optimum space management ❖ 78% open areas
- ❖ Low pollution level ❖ Earthquake resistant structure

Disclaimer: All Details, Floor Plans, Rendered Views, Specifications are indicative and subject to change as and when decided by the management/company or by the competent authority in the best interest of the development.

Site Plan



Disclaimer: All Details, Floor Plans, Rendered Views, Specifications are indicative and subject to change as and when decided by the management/company or by the competent authority in the best interest of the development.

Specifications

STRUCTURE	Framed Structure conforming to BIS seismic codes with masonry filler walls	
FLOORFINISHES	Living/Dining Bedrooms Stairs Balconies	Vitrified tiles Ceramic tiles Stone Flooring on Treads Non-skid Ceramic tiles
TOILETS	Flooring Walls Chinaware Counter Water Supply Other Fixtures	Non-skid ceramic tiles/porcelain tiles Tiles as per architectural design European type WC, hand wash basin, CP fittings Stone counter (wherever shown in Sale Plan) Provision for hot and cold water supply Soap dish and health faucet
KITCHEN	Flooring Dado Counter Water Supply Fittings Sink	Non-skid ceramic tiles or equivalent Ceramic tile cladding on walls as per architectural design Marble Provision for hot and cold water supply CP fittings Stainless steel sink with drain board
JOINERY	Windows Doors	UPVC/Anodized aluminum with float glass Machine made moulded door Shutter with aluminum fittings
FINISHES	Internal Exterior	Drawing/Dining rooms, Bedroom walls shall be finished with O.B.D. paint Pleasing elevation with semi-permanent finish/all weather exterior paints
OTHERFEATURES	Electrical Telecommunication	Copper wiring in conduits with modular switches Provision of telephone points in drawing/dining room and all bedrooms. Provision of TV aerial points in drawing room and all bedrooms

Highlights of the Township



S.J. International School



Best Price— Joint venture between Bharti & Walmart Operational

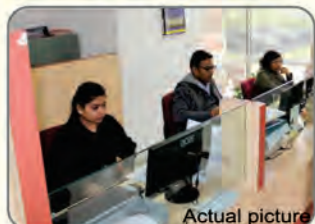


G.D. Goenka Public School



Ansal Institute of Technology & Management (AITM)

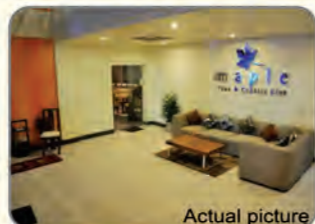
A few of the operational facilities in Sushant Golf City, Lucknow



ALLAHABAD BANK



POST OFFICE

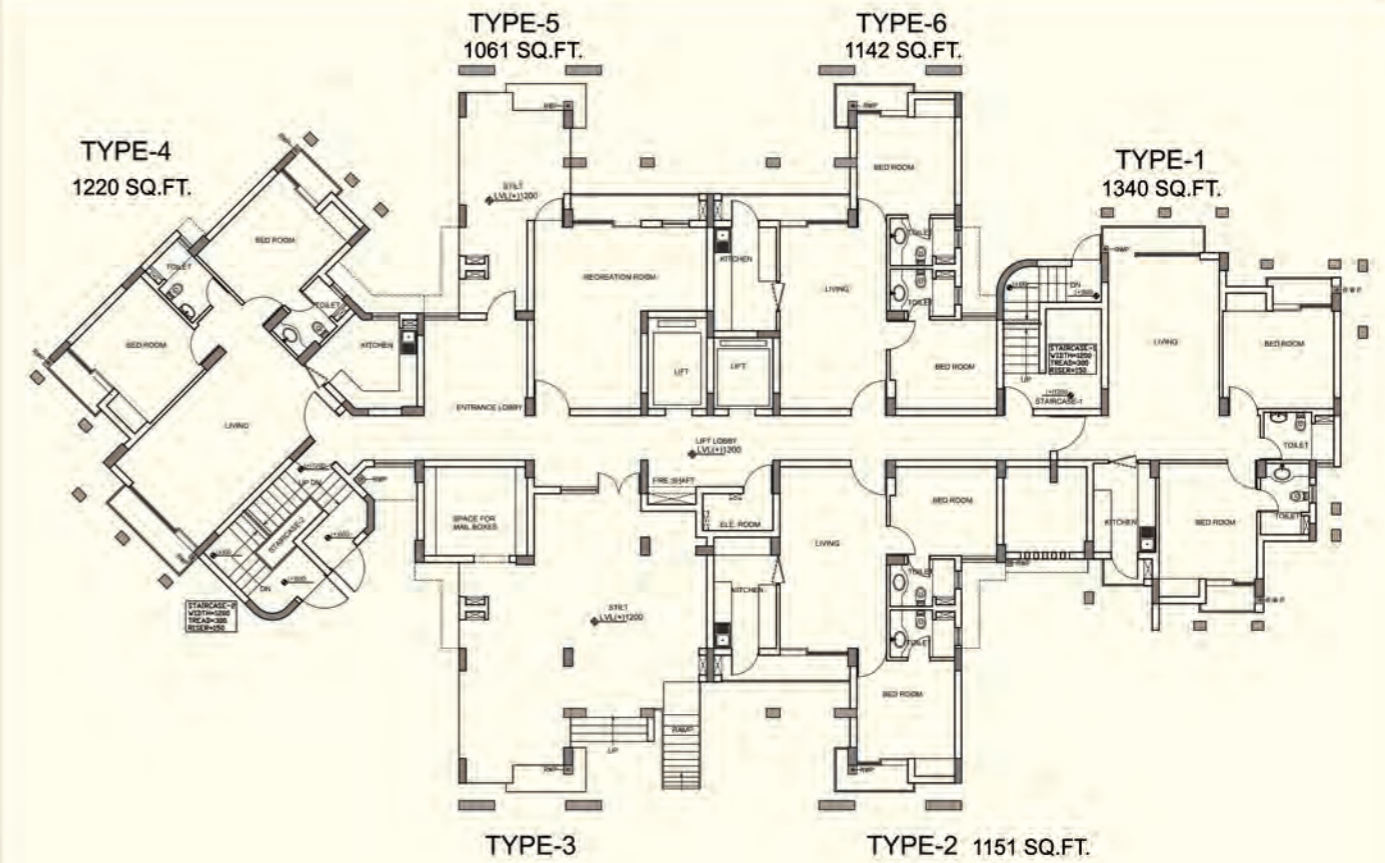


MAPLE CLUB

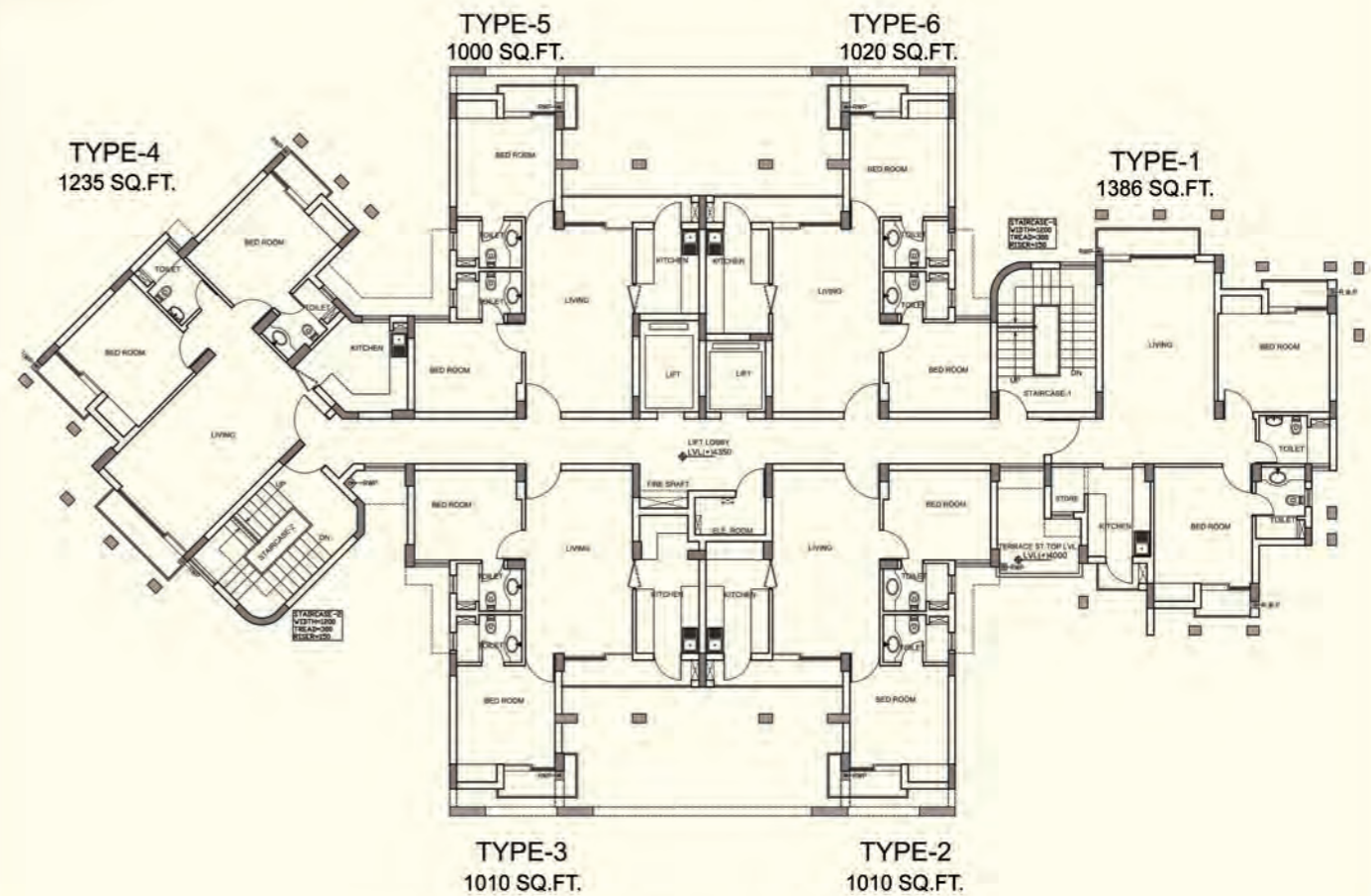


MILK & MORE STORE

Disclaimer: All Details, Floor Plans, Rendered Views, Specifications are indicative and subject to change as and when decided by the management/company or by the competent authority in the best interest of the development.

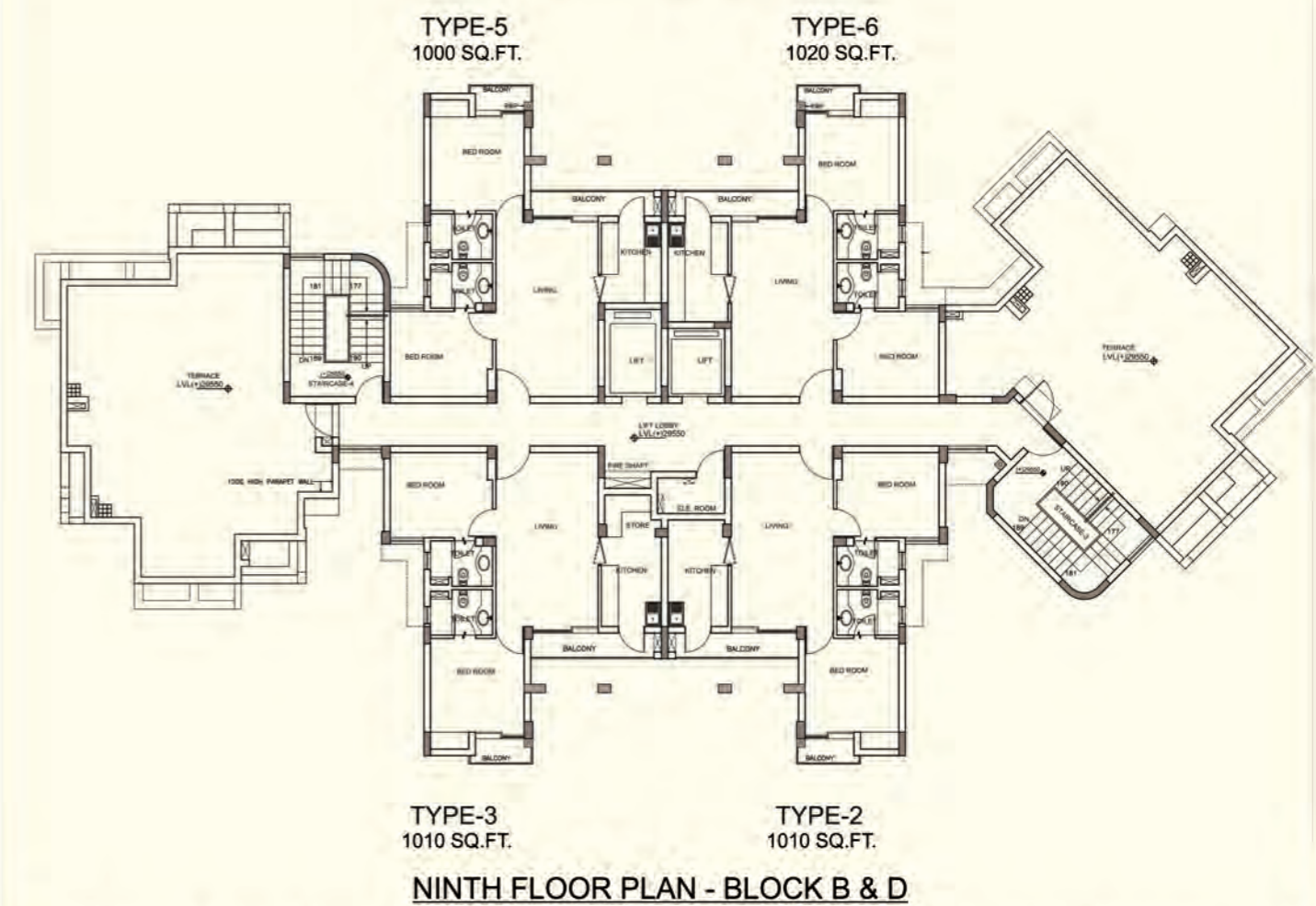
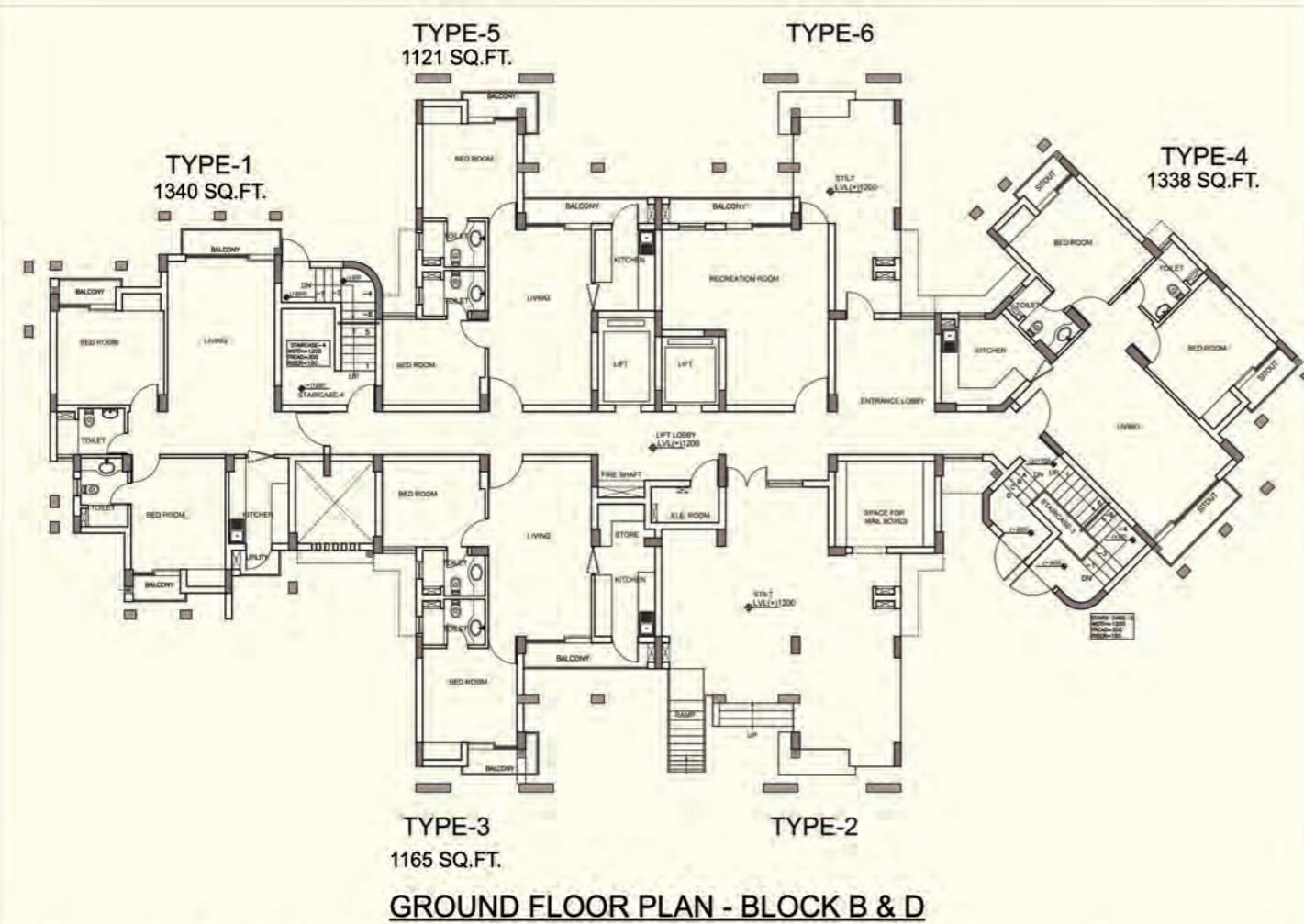
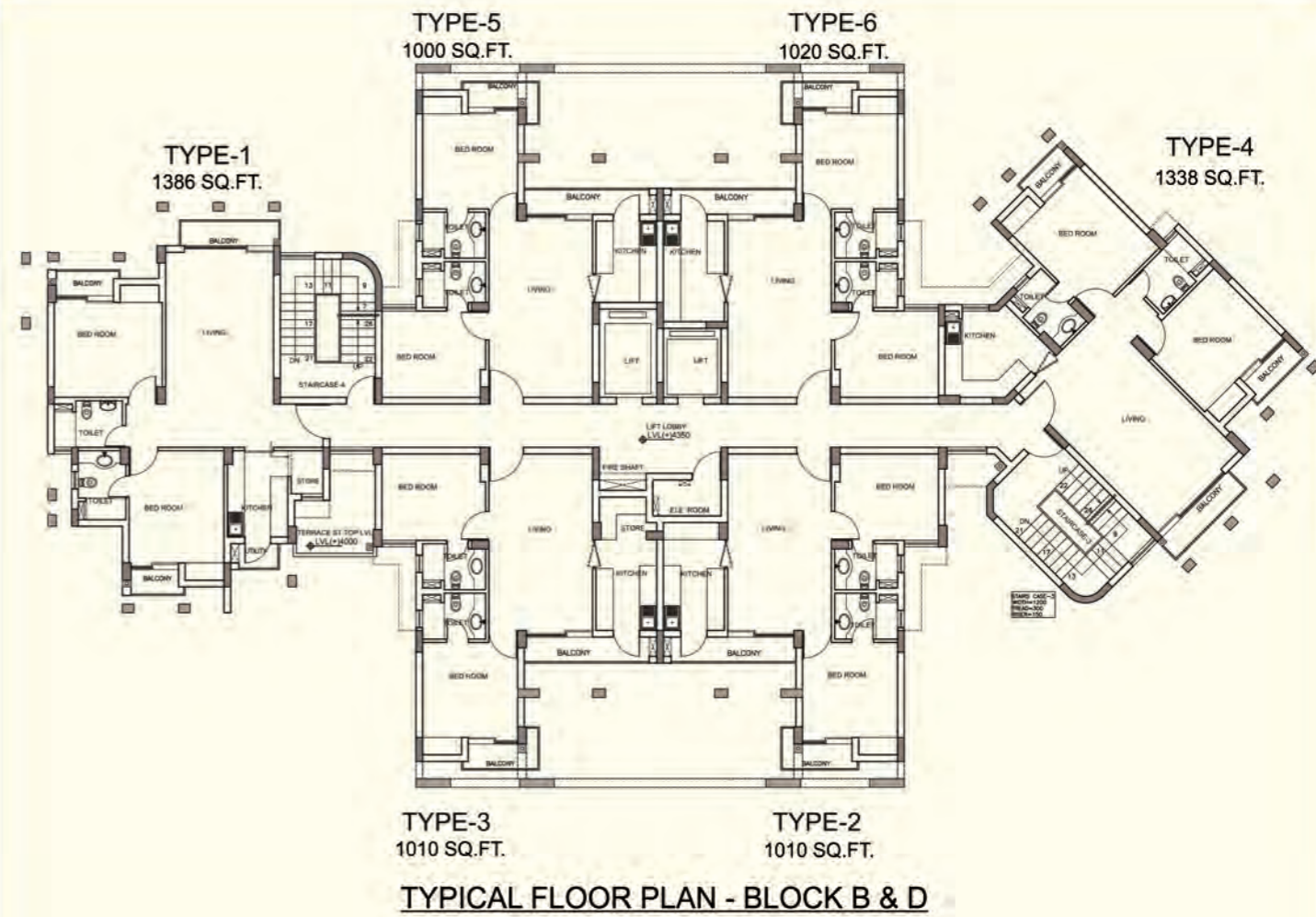
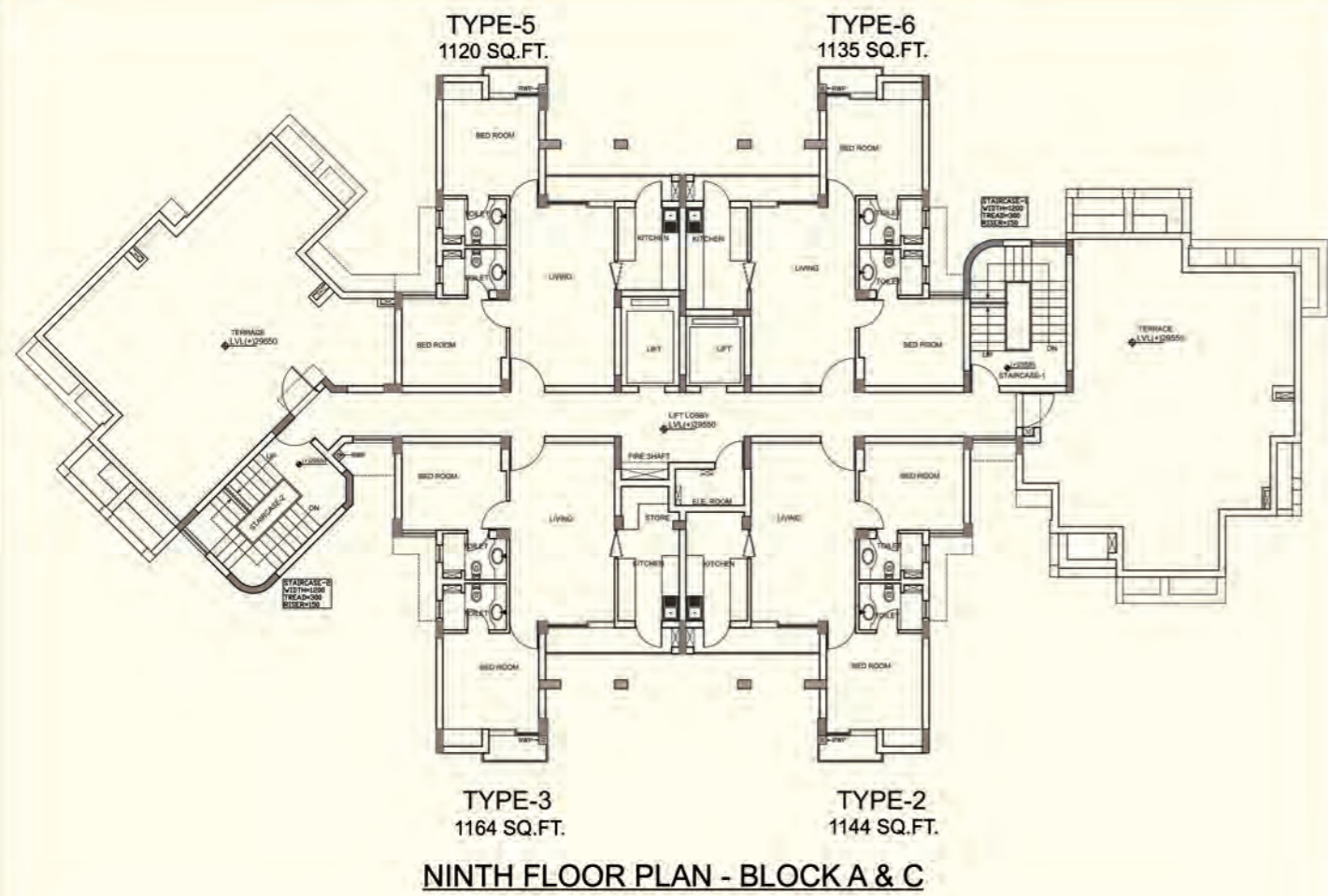


GROUND FLOOR PLAN - BLOCK A & C



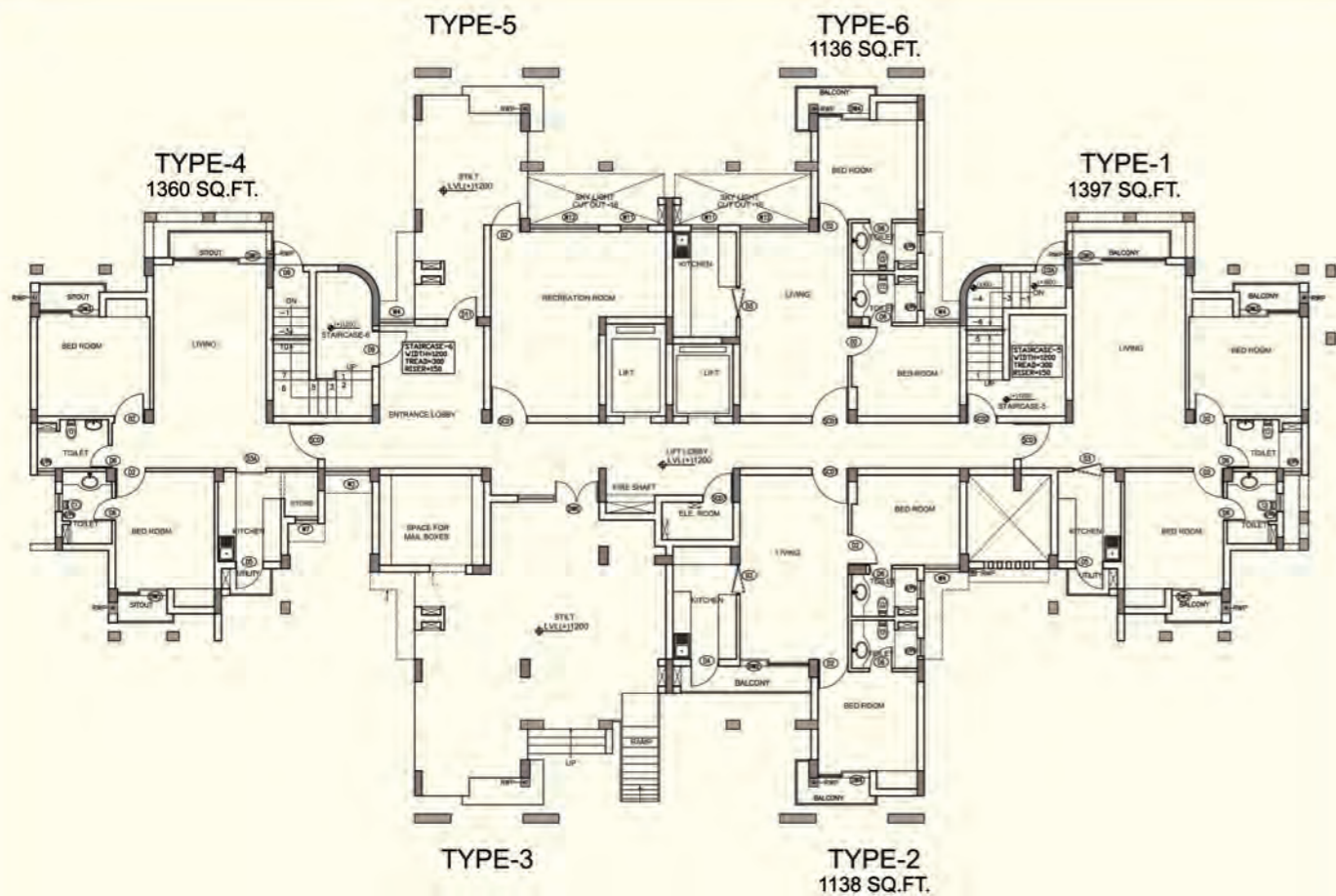
TYPICAL FLOOR PLAN - BLOCK A & C

Disclaimer: All Details, Floor Plans, Rendered Views, Specifications are indicative and subject to change as and when decided by the management/company or by the competent authority in the best interest of the development.

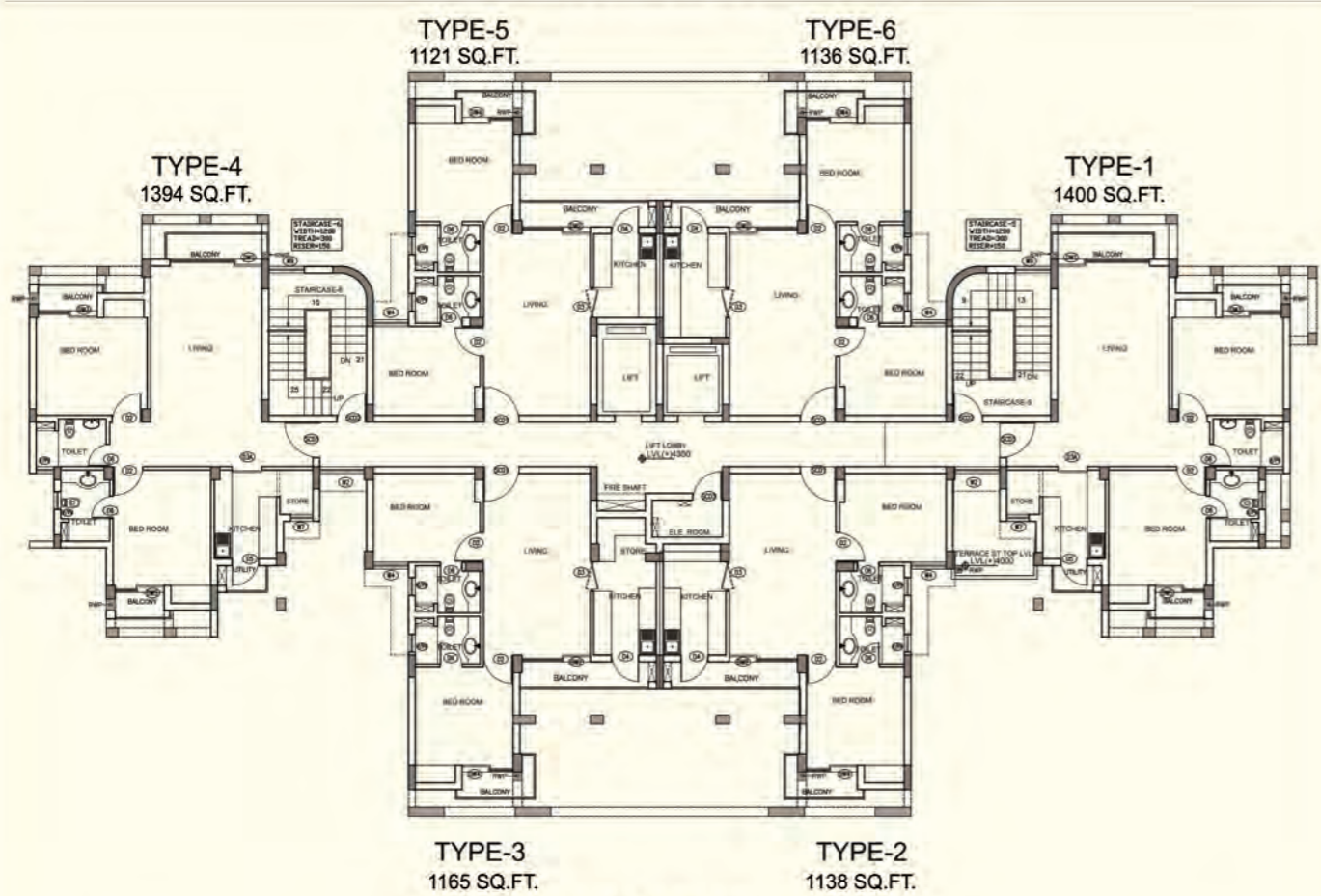


Disclaimer: All Details, Floor Plans, Rendered Views, Specifications are indicative and subject to change as and when decided by the management/company or by the competent authority in the best interest of the development.

Disclaimer: All Details, Floor Plans, Rendered Views, Specifications are indicative and subject to change as and when decided by the management/company or by the competent authority in the best interest of the development.

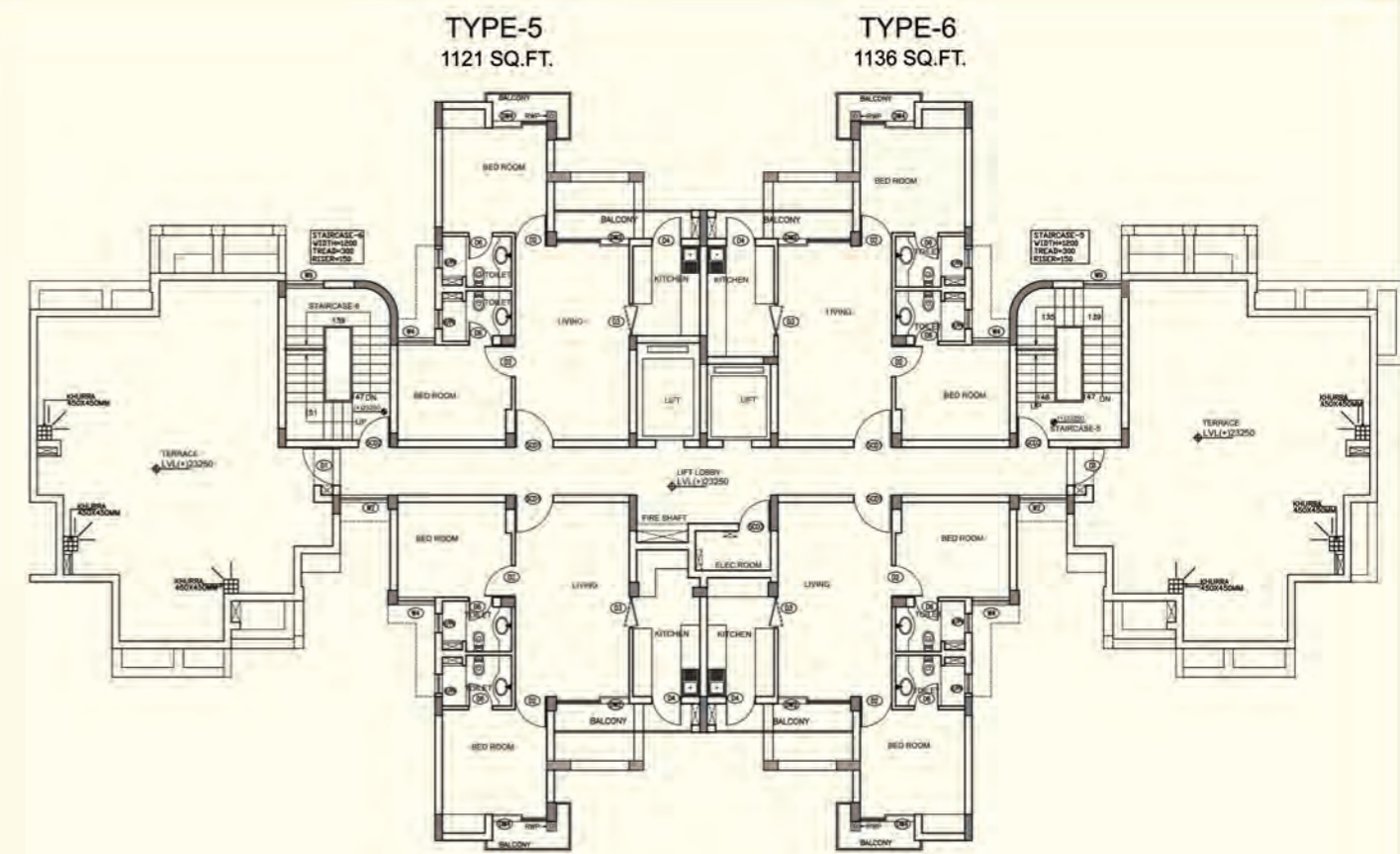


GROUND FLOOR PLAN - BLOCK E

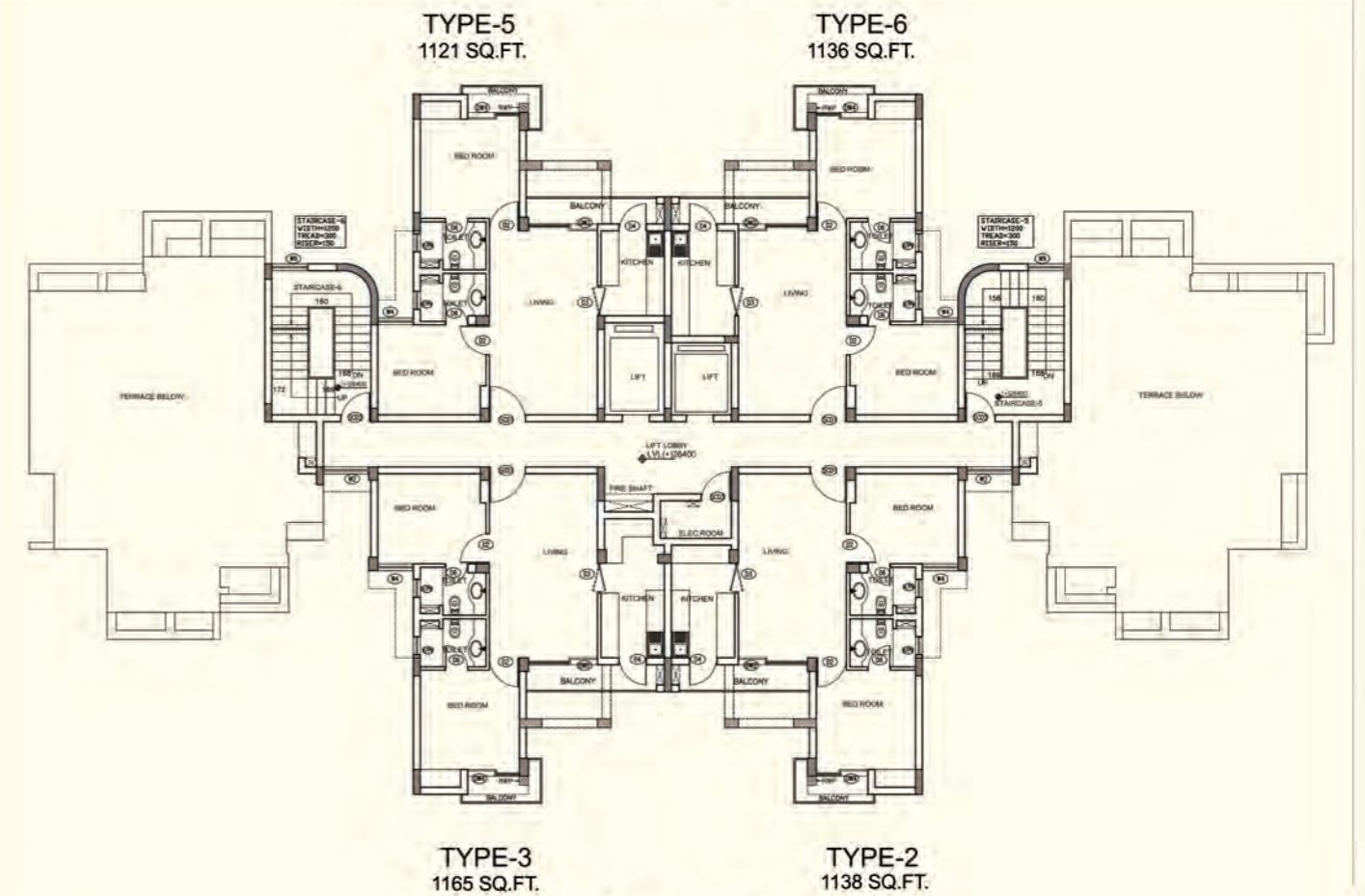


TYPICAL FLOOR PLAN - BLOCK E

Disclaimer: All Details, Floor Plans, Rendered Views, Specifications are indicative and subject to change as and when decided by the management/company or by the competent authority in the best interest of the development.

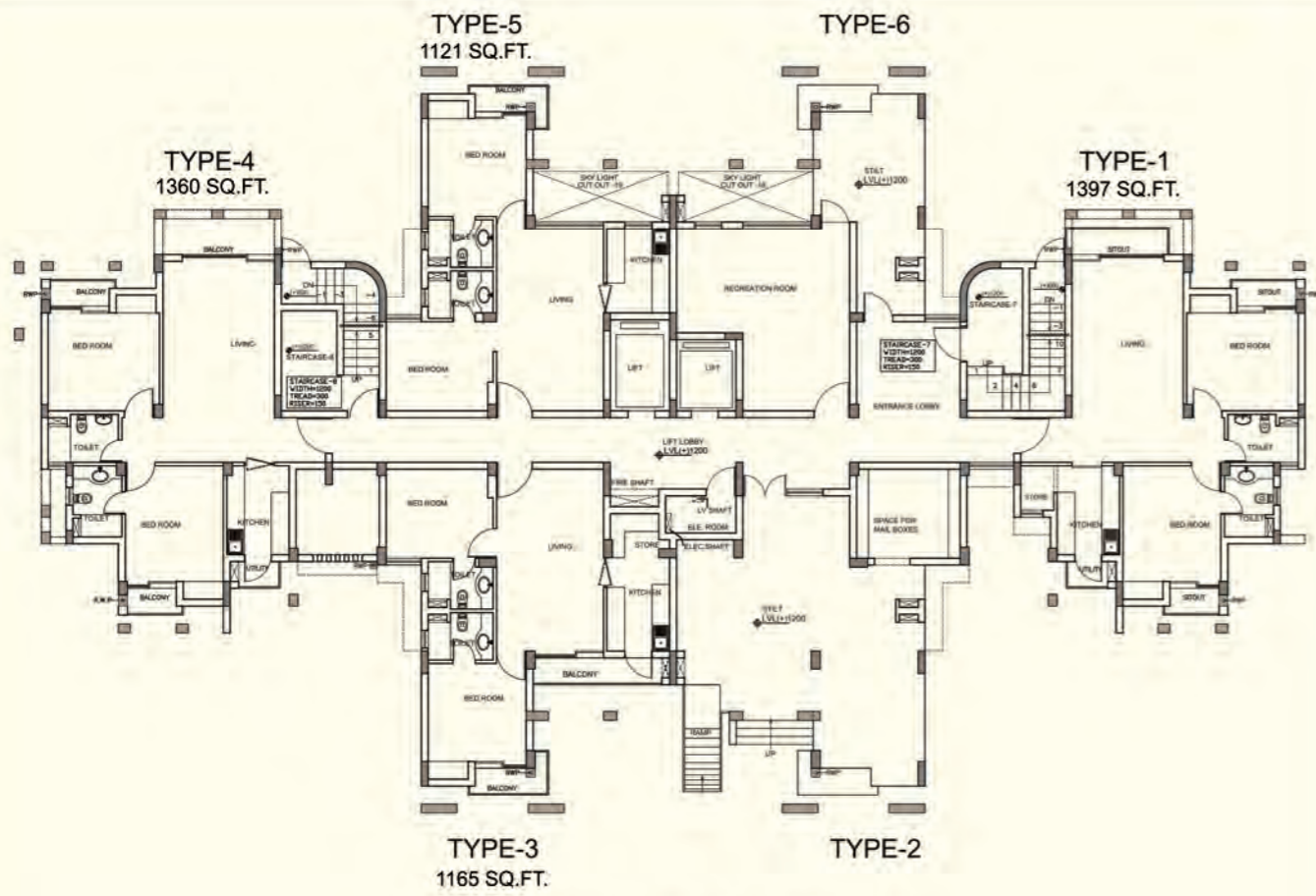


SEVENTH FLOOR PLAN - BLOCK E

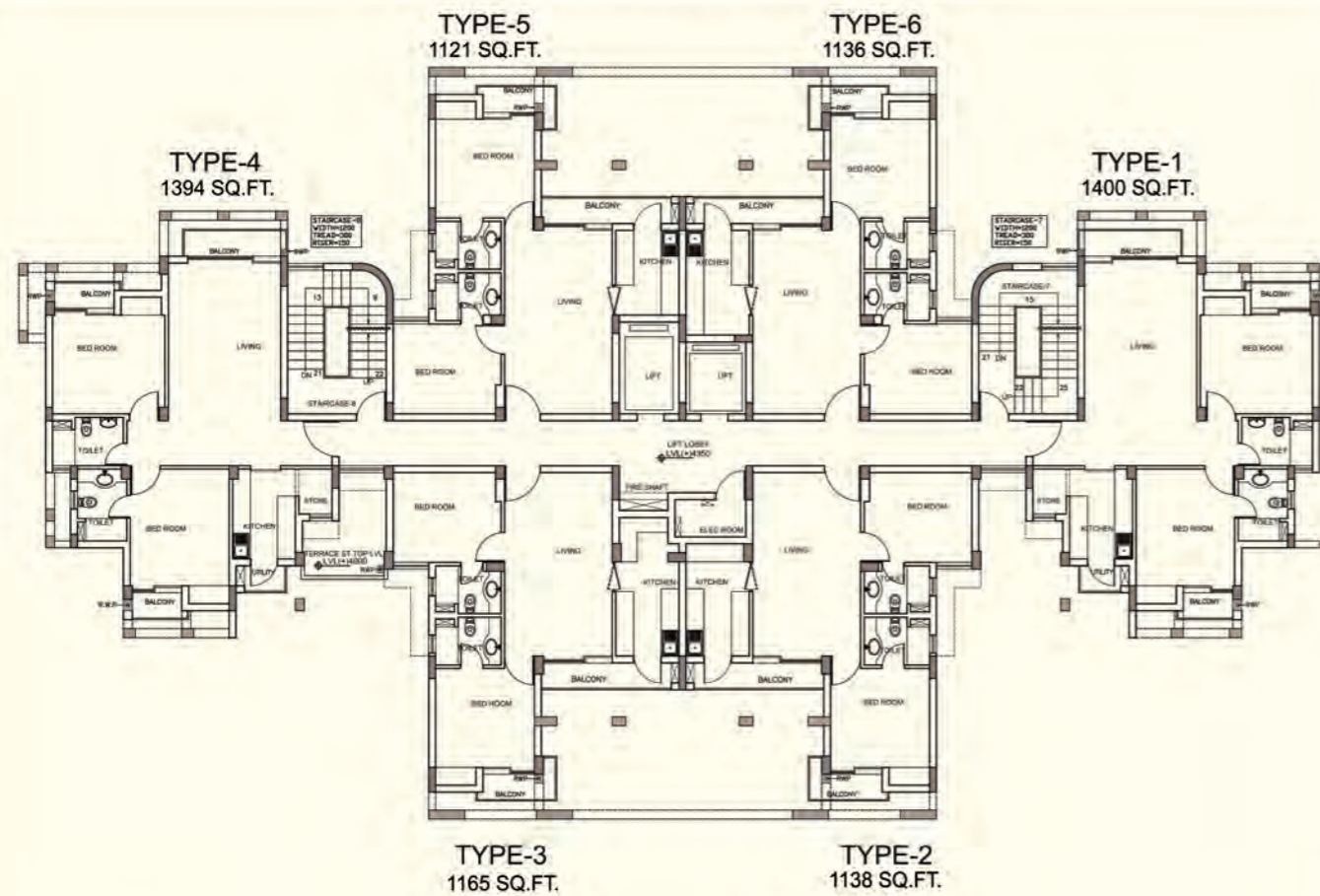


EIGHTH FLOOR PLAN - BLOCK E

Disclaimer: All Details, Floor Plans, Rendered Views, Specifications are indicative and subject to change as and when decided by the management/company or by the competent authority in the best interest of the development.

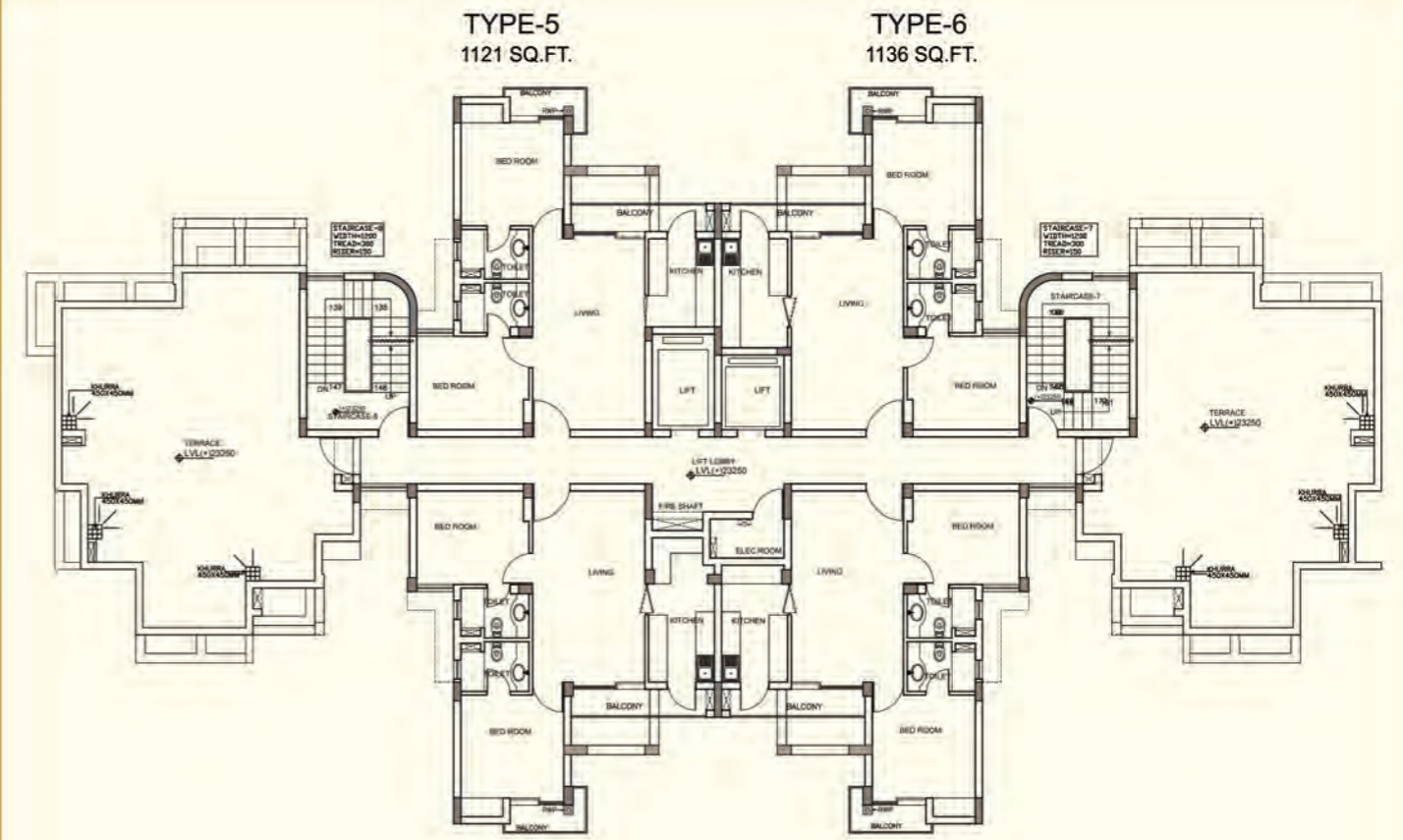


GROUND FLOOR PLAN - BLOCK F

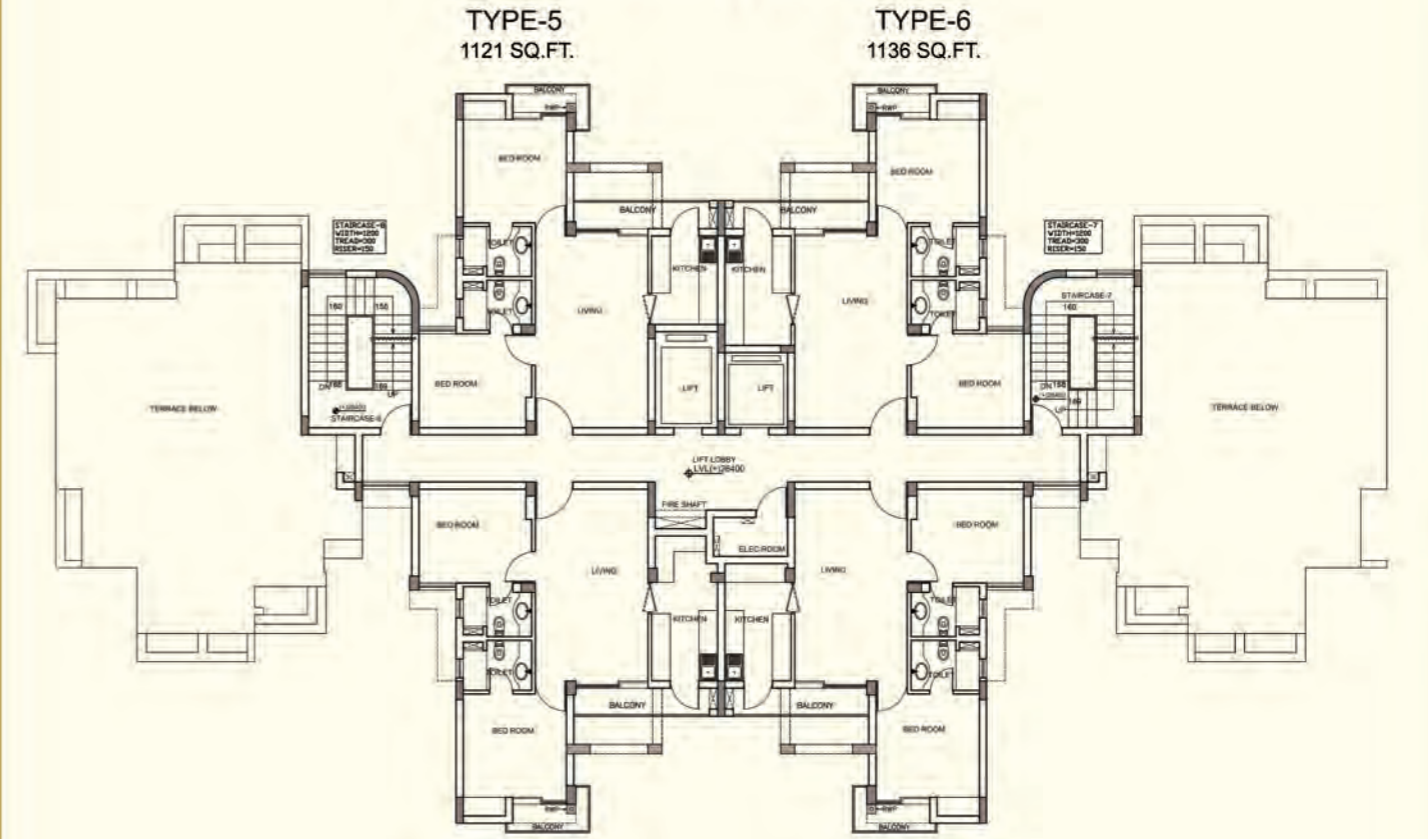


TYPICAL FLOOR PLAN - BLOCK F

Disclaimer: All Details, Floor Plans, Rendered Views, Specifications are indicative and subject to change as and when decided by the management/company or by the competent authority in the best interest of the development.



SEVENTH FLOOR PLAN - BLOCK F



EIGHTH FLOOR PLAN - BLOCK F

Disclaimer: All Details, Floor Plans, Rendered Views, Specifications are indicative and subject to change as and when decided by the management/company or by the competent authority in the best interest of the development.